

A **first impression** that lasts



Stand out effortlessly with the Schlage range of entrance door hardware.

Our Schlage door hardware offers a simple selection process, enhances the style of your home, keeps it safe and even makes it smarter.

Protect what matters most.



Cover Image Credit: Dennis Radermacher - Lightforge



Credit: Dennis Radermacher - Lightforge

A FIRST IMPRESSION THAT LASTS

Trusted to secure and decorate millions of homes around the world, Schlage creates stylish, innovative door hardware solutions. Ranging from a traditional mechanical statement to a smarter connected solution, Schlage protects what matters most.

FINISH YOUR HOME IN STYLE

Schlage offers a variety of finishes to complement both the front door itself and the overall style of the home, allowing homeowners to freely express their individuality.



SATIN BLACK CHROME
SBC



BLACK
B



SATIN CHROME
SCP



SATIN NICKEL
SNP



SATIN STAINLESS STEEL
SSS



Electronic

STRIKING AND VERSATILE, BRIDGING MODERN STYLES WITH SMART TECHNOLOGY

Schlage connected smart locks combine innovative technology with modern sleek designs, providing your home with the convenience of keyless simplicity. Pair your Schlage electronic lock with our stylish range of grand pull handles and entrance sets for a smarter and bolder first impression.

Schlage Encode™

MAKING HOMES SMARTER

The revolutionary Schlage Encode™ Smart Wi-Fi Deadbolt connects directly to your home Wi-Fi. There's no need to purchase an extra accessory or hub to control your lock from anywhere, making it easy and intuitive to use.

Simply pair your lock with the Schlage Home app on your smartphone to lock and unlock your door from anywhere. You specify who has access and when by setting up to 100 codes, or send virtual keys to trusted friends, family or guests via text or email. Receive notifications when your lock has been accessed.

Total control and peace of mind at your fingertips.



ENCODE (SNP)
SRE60121



ENCODE (BLACK)
SRE60120

FEATURES

- Graded best in Security, Durability and Finish (BHMA Grading System)
- Built in Wi-Fi for remote access and control
- Fingerprint resistant
- Illuminated touch screen
- 4 x AA alkaline batteries included
- 2.4 GHz Wi-Fi technology
- Built-in alarm
- Auto locking

ACCESS

- Access by PIN, key, Schlage Home app, or virtual assistants
- 100 user code capacity
- User codes can be set up as permanent, temporary or recurring access
- Works with Amazon Alexa and Google Assistant

DOOR SPECIFICATIONS

- 54mm hole preparation - easy to retrofit
- 60mm or 70mm backset (adjustable)
- 35mm to 46mm door thickness
- Extension kit available for 47mm to 64mm

WARRANTY

- 3 year electronic warranty
- Limited lifetime mechanical warranty



Schlage Encode SNP B

Schlage Ease™

STYLED FOR THE SMARTER FAMILY HOME

The Schlage Ease™ range offers a stylish lock packed with modern functions the whole family can enjoy.

Consider the sleek design of the Schlage Ease™ S1 Smart Deadbolt or the convenient Schlage Ease™ S2 Smart Entry Lock with built-in lever, providing you and your family convenience and security for safer living.

Simple to program storing up to 20 access codes. Pair your lock with the Schlage Abode app on your smartphone to unlock your door and provide access to friends and family at the touch of a button.

Go keyless, for a smarter way of living.



EASE S1 SMART DEADBOLT
SREEAS1C5BL



EASE S2 SMART ENTRY LOCK
SREEAS2C5BL

FEATURES

- Built-in alarm
- Auto locking
- Backlit touch screen
- Micro USB for emergency power
- 4 x AA alkaline batteries included
- Schlage C5 cylinder
- Can be keyed alike to other Schlage locksets
- Weather resistant (tested to IP54)

ACCESS

- Access by PIN, key or Schlage Abode app
- 20 user code capacity
- Remote access available with Schlage Wi-Fi Bridge (AB100) (sold separately)
- Works with Amazon Alexa and Google Assistant

DOOR SPECIFICATIONS

- 54mm hole preparation - easy to retrofit
- 60mm or 70mm backset (adjustable)
- 33mm to 50mm door thickness




WARRANTY

- 2 year mechanical and electronic warranty



Schlage Ease S1 Smart Deadbolt and S2 Smart Entry Lock ● B

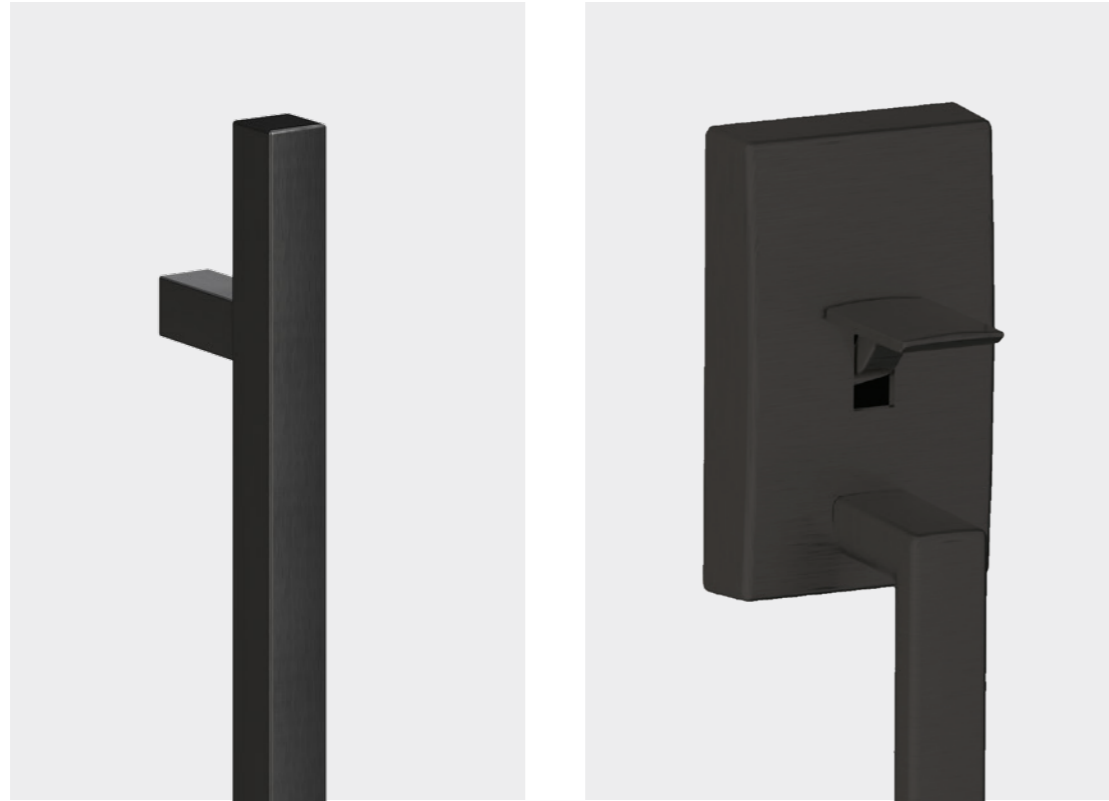
SCHLAGE ELECTRONIC SELECTOR CHART

	Schlage Encode™	Schlage Ease™ S1 Deadbolt	Schlage Ease™ S2 Entry Lock
Key benefit	 <p>Use Schlage Home for easy setup and control with iOS and Android smartphones</p>	 <p>Use Schlage Abode for easy setup and control with iOS and Android smartphones</p>	 <p>Use Schlage Abode for easy setup and control with iOS and Android smartphones</p> <p>Contains built-in lever</p>
Sharing access	Use Schlage Home app to manage access codes and share virtual keys	Use Schlage Abode app to manage access codes and share virtual keys	Use Schlage Abode app to manage access codes and share virtual keys
Remote access	Built-in Wi-Fi provides remote access – no additional accessories required	Remote access with the Schlage Wi-Fi Bridge (AB100)	Remote access with the Schlage Wi-Fi Bridge (AB100)
Voice assistants	Amazon Alexa Google Assistant	Amazon Alexa Google Assistant	Amazon Alexa Google Assistant
Access codes	100	20	20
Advanced security	Built-in alarm	Built-in alarm Random PIN number protection	Built-in alarm Random PIN number protection
Auto locking	Yes	Yes	Yes
Durability	Graded best in Security, Durability and Finish (BHMA Grading System)	IP54 rain and dust resistant	IP54 rain and dust resistant
Available finishes	Satin Nickel Plate and Black	Black	Black
Warranty*			
- Mechanical	Limited lifetime	2 years	2 years
- Electronic	3 years	2 years	2 years



* For the finish warranty, refer to our website allegion.co.nz/finisheswarranty

Schlage Electronic Entrance Sets



BLACK



ANDOR ENCODE
Turn: SRS61-625SBC
Roller: SRS61-625RSBC

TRENTO ENCODE
Turn: SRS64-620SBC
Roller: SRS64-620RSBC

TURIN ENCODE
Turn: SRS63-600SBC
Roller: SRS63-600RSBC

CORFU ENCODE
Turn: SRS67-600SBC
Roller: SRS67-600RSBC



OBLONG ENCODE
Turn: SRS6E-600TMB

OBLONG EASE
Turn: SRS61-600TMB

CENTURY/LATITUDE ENCODE
SRS60MB

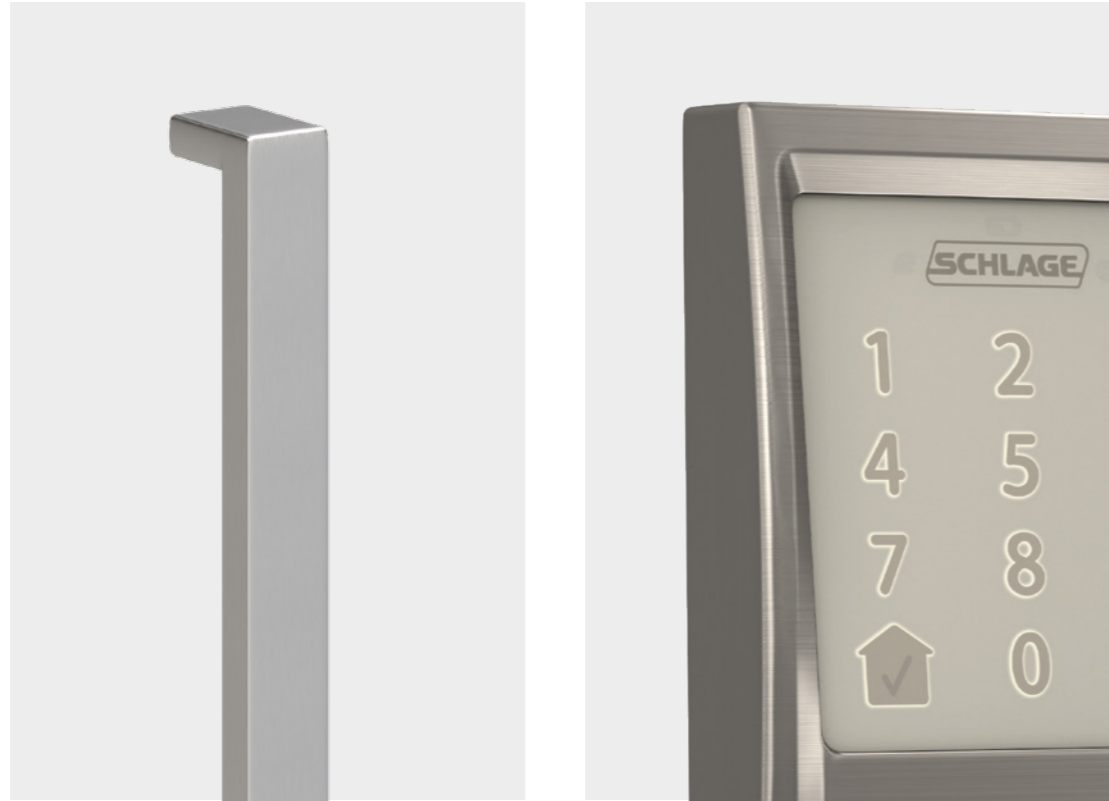
ROLLER LATCH
If you prefer a minimalistic look, you can opt for the roller latch set (without turn). Roller latch is concealed in door frame.

Andor, Trento, Turin, Corfu pull handles and thumb turns ● SBC Oblong pull handle ● MB Schlage Encode, Schlage Ease, and Century/Latitude ● B



Smart deadbolt sets consist of Schlage Encode™ Smart Wi-Fi Deadbolt or Schlage Ease™ S1 Smart Deadbolt, pull handles, and thumb turn or roller latch (applicable sets only). **Satin Black Chrome** (Andor, Trento, Turin and Corfu) pull handles are made from 316L marine grade stainless steel with a high-quality electroplated finish; **Matt Black** (Oblong) pull handle is made from 304 stainless steel with a black powder coated finish, (Century Latitude) is made from solid forged brass, with a black powder coated finish.

Schlage Electronic Entrance Sets



CLASSIC



VERTA ENCODE
Turn: SRS69-800SSS
Roller: SRS69-800RSSS

ANDOR ENCODE
Turn: SRS61-625SSS
Roller: SRS61-625RSSS

TRENTO ENCODE
Turn: SRS64-620SSS
Roller: SRS64-620RSSS

TURIN ENCODE
Turn: SRS63-600SSS
Roller: SRS63-600RSSS



CORFU ENCODE
Turn: SRS67-600SSS
Roller: SRS67-600RSSS

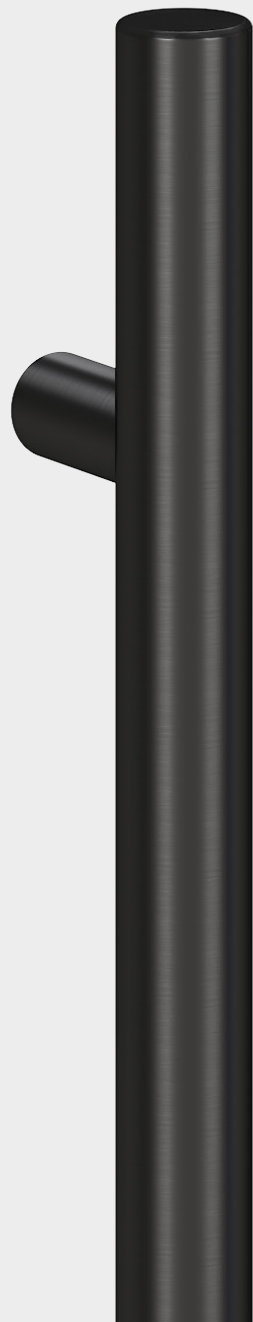
CENTURY/ORBIT
SRS60SNP

ROLLER LATCH
If you prefer a minimalistic look, you can opt for the roller latch set (without turn). Roller latch is concealed in door frame.

Pull handles and thumb turns ● SSS Schlage Encode and Century/Latitude ● SNP



Smart deadbolt sets consist of Schlage Encode™ Smart Wi-Fi Deadbolt, pull handles, and thumb turn or roller latch (applicable sets only). **Satin Stainless Steel** (Verta, Andor, Trento, Turin, Corfu and Oblong) pull handles are made from 316L marine grade stainless steel, **Satin Nickel Plate** (Century Latitude) is made from solid forged brass.



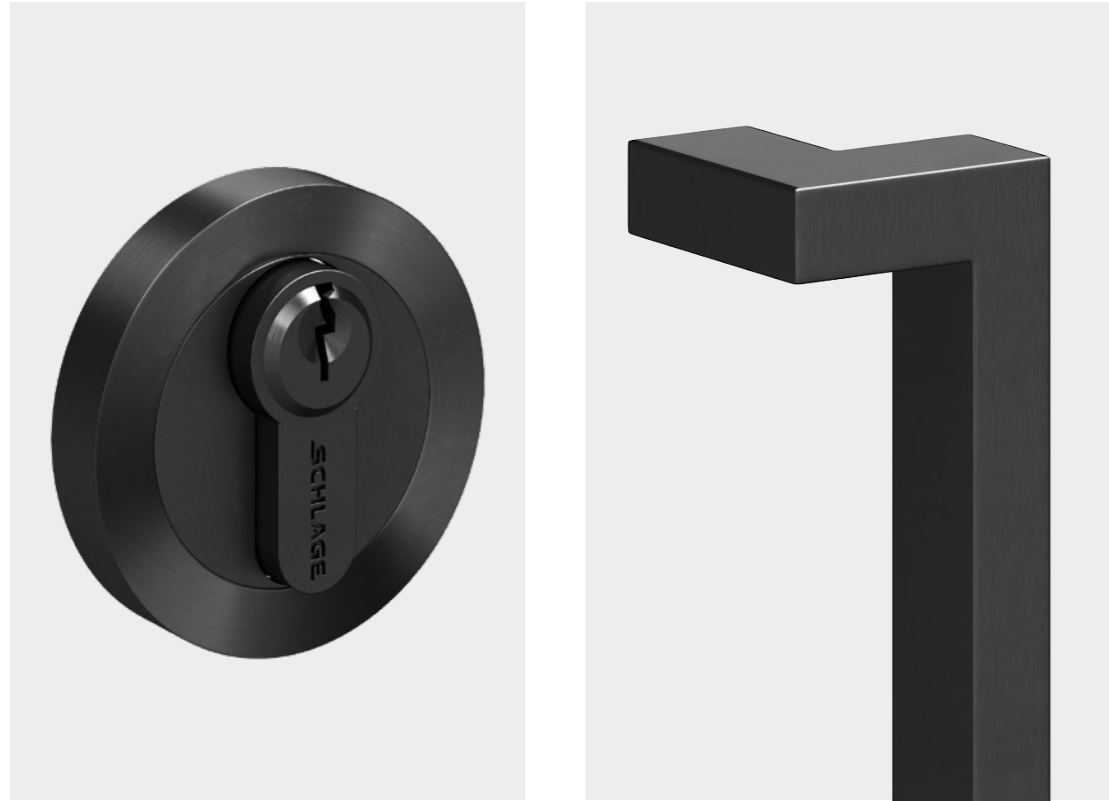
Credit: Dennis Radermacher - Lightforge

Mechanical

SUBTLE LUSTRE IS EDGY AND ALLURING, BUT NEVER GRANDIOSE

The timeless and graceful look of a mechanical entrance solution provides that European feel, blending form with function to complement the style of your home. The Schlage range of mechanical entrance solutions offers grand pull handle designs, elegant entrance sets, deadbolts and turns. Sophistication at your fingertips.

Schlage Mechanical Entrance Sets



BLACK



ANDOR
SRS11-625SBC

TRENTO
SRS14-620SBC

TURIN
SRS13-600SBC

CORFU
SRS17-600SBC



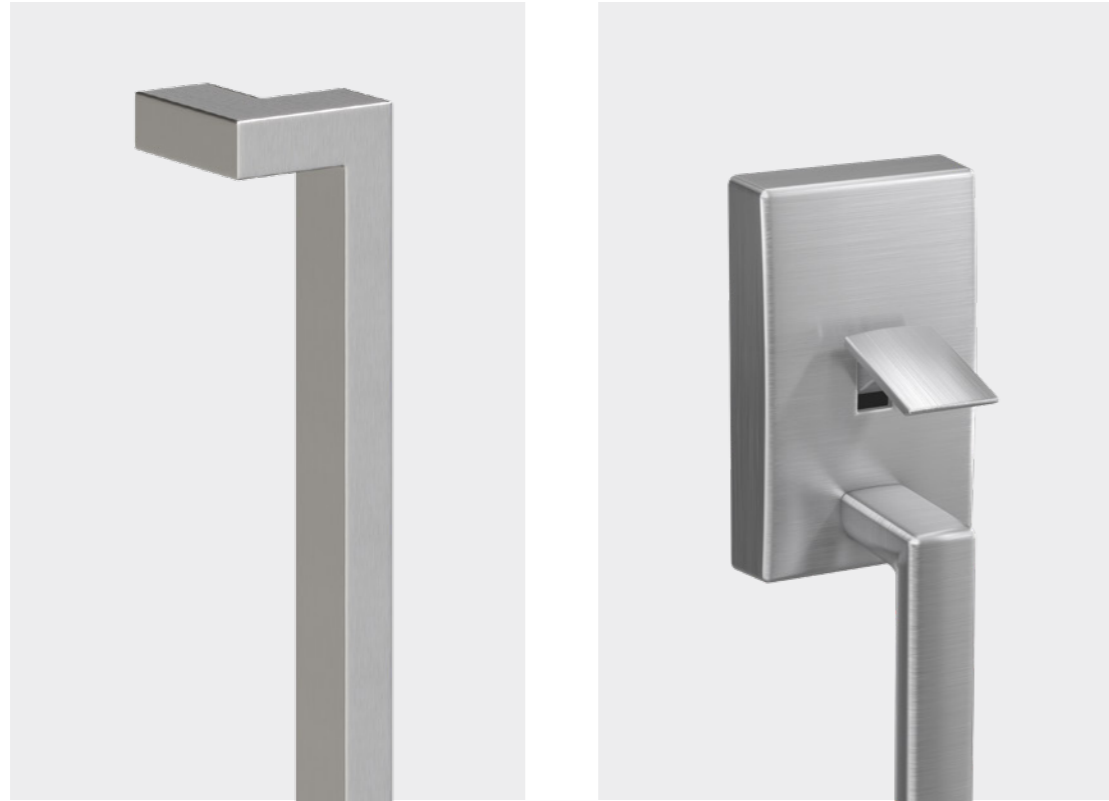
OBLONG
SRS4-600TMB

CENTURY/LATITUDE
Deadbolt: SRL4SSMB
Gripset: SRL32205

Andor, Trento, Turin, Corfu pull handles, thumb turns and escutcheons ● SBC Oblong pull handles and Century/Latitude ● MB

Entrance sets* consist of pull handles, thumb turns, mortice lock and a single euro cylinder with escutcheons. *Except the Oblong set which consists of a pull handle, thumb turn and a single cylinder deadbolt. **Satin Black Chrome** (Andor, Trento, Turin and Corfu) pull handles are made from 316L marine grade stainless steel with an electroplated finish; **Matt Black** (Oblong) pull handle is made from 304 stainless steel with a black powder coated finish, (Century/Latitude) entrance set is made from solid forged brass, with a black powder coated finish.

Schlage Mechanical Entrance Sets



CLASSIC



VERTA
SRS19-800SSS

ANDOR
SRS11-625SSS

TRENTO
SRS14-620SSS

TURIN
SRS13-600SSS



CORFU
SRS17-600SSS

CENTURY/ORBIT
SRL14214

BOSTON
RBENTGSS

Pull handles, thumb turns and escutcheons ● SSS Century/Latitude and Boston entrance set ● SCP

Entrance sets* consist of pull handles, thumb turns, mortise lock and a single euro cylinder with escutcheons.
 *Except the Oblong set which consists of a pull handle, thumb turn and a single cylinder deadbolt.
Satin Stainless Steel (Verta, Andor, Trento, Turin, Corfu and Oblong) pull handles are made from 316L marine grade stainless steel,
Satin Chrome Plate (Century/Orbit and Boston) entrance set is made from solid forged brass.





For more than a century, Schlage has helped protect what matters most – peace of mind.

Trusted in over 40 million homes, we strive to enhance everyday life by delivering door hardware and access control solutions focused on reliable experiences, modern simplicity, thoughtful innovation, and a dedication to craftsmanship. Where some see just a door, we see an opportunity to help turn a home into a haven.

Trust your home to Schlage.

ALLEGION (NEW ZEALAND) LIMITED

Freephone 0800 477 869
Email nzinfo@allegion.com
www.allegion.co.nz

ABOUT ALLEGION™

Allegion (NYSE: ALLE) is a global pioneer in seamless access, with leading brands like CISA®, Interflex®, LCN®, Schlage®, SimonsVoss® and Von Duprin®. Focusing on security around the door and adjacent areas, Allegion secures people and assets with a range of solutions for homes, businesses, schools and stitutions.

For more, visit www.allegion.co.nz

Amazon, Alexa and all related logos are trademarks of Amazon.com, Inc. or its affiliates.
Google is a trademark of Google LLC.

